



Old Ford Road, London, E3

BUTLER & STAG



Price Guide £750,000 - £800,000
Arranged over three elevations, this beautifully presented three-storey townhouse offers generous and versatile accommodation, thoughtfully extended to the ground floor. The property provides well-balanced living space, ideal for modern family life.



Freehold

- Three Storey Town House
- Immaculate Presentation
- Extended To Ground Floor - 1177 Sq/Ft Internal Living Space
- Three Bedrooms
- South Facing Garden
- Two Bathrooms
- Versatile Living Accommodation
- Victoria Park A Moments Walk Away

The ground floor extension enhances the sense of space and functionality, creating an inviting area for everyday living and entertaining. Across the upper floors are three well-proportioned bedrooms, complemented by stylish bathrooms and an additional Living room ample storage throughout.

Located on Old Ford Road, the home enjoys a highly desirable position moments from the open green spaces of Victoria Park, as well as excellent transport links and a vibrant selection of local amenities, cafés, and shops.

This is a superb opportunity to acquire a turnkey family home in one of East London's most sought-after locations.

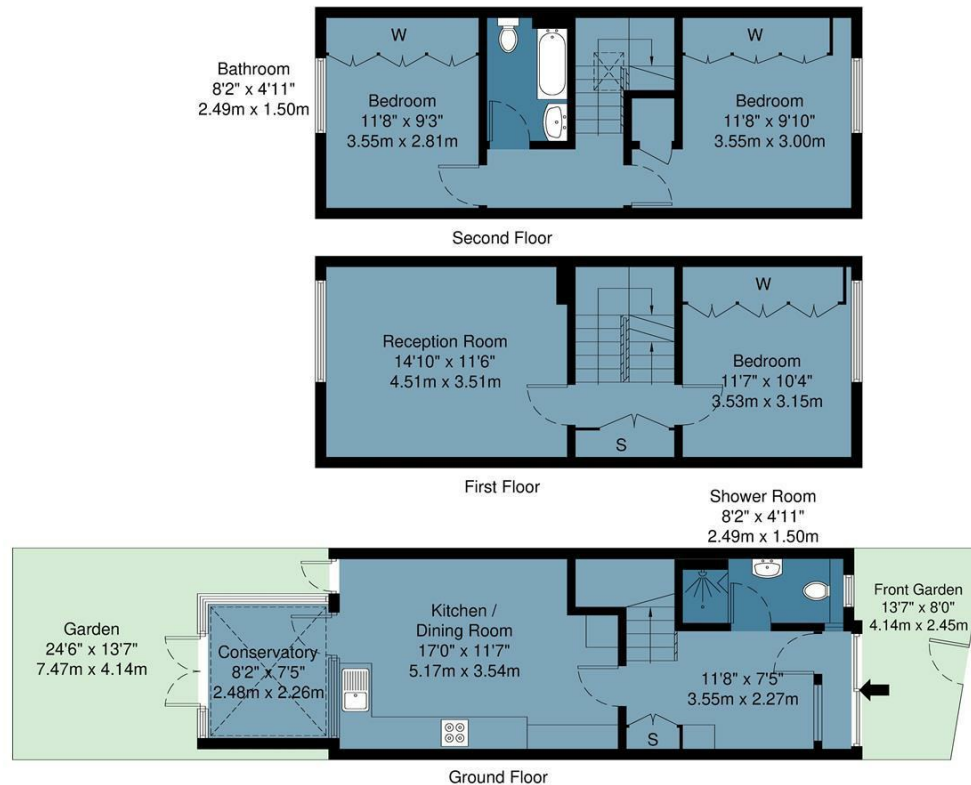




Old Ford Road, E3

Approx Gross Internal Area : 109.4 sq m / 1177 sq ft

BUTLER & STAG



Measurements are approximate and for illustration purposes only. While we do not doubt the accuracy and completeness, we advise you conduct a careful independent assessment of the property to determine monetary value.
© @ Maison VUE | www.maisonvue.com

BUTLER & STAG

☎ 020 8102 1236

🏠 508 Roman Road, Bow, London, E3 5LU

✉ bow@butlerandstag.com

www.butlerandstag.uk

IMPORTANT NOTICE - These particulars have been prepared in good faith and they are not intended to constitute part of an offer or contract. We have not performed a structural survey on this property and the services, appliances and specific fittings have not been tested. All photographs, measurements, floor plans and distances referred to are given as a guide and should not be relied upon.